



Orchid Close, Abridge, RM4

BUTLER & STAG



A smart and well-presented two bedroom apartment, located on the second floor of a modern purpose built block.



- Second Floor Two Bedroom Apartment
- Two Allocated Parking Spaces
- Short Distance To Theydon Bois Central Line
- Open Plan Lounge/Kitchen/Diner
- Access To Loft Storage
- Available Now

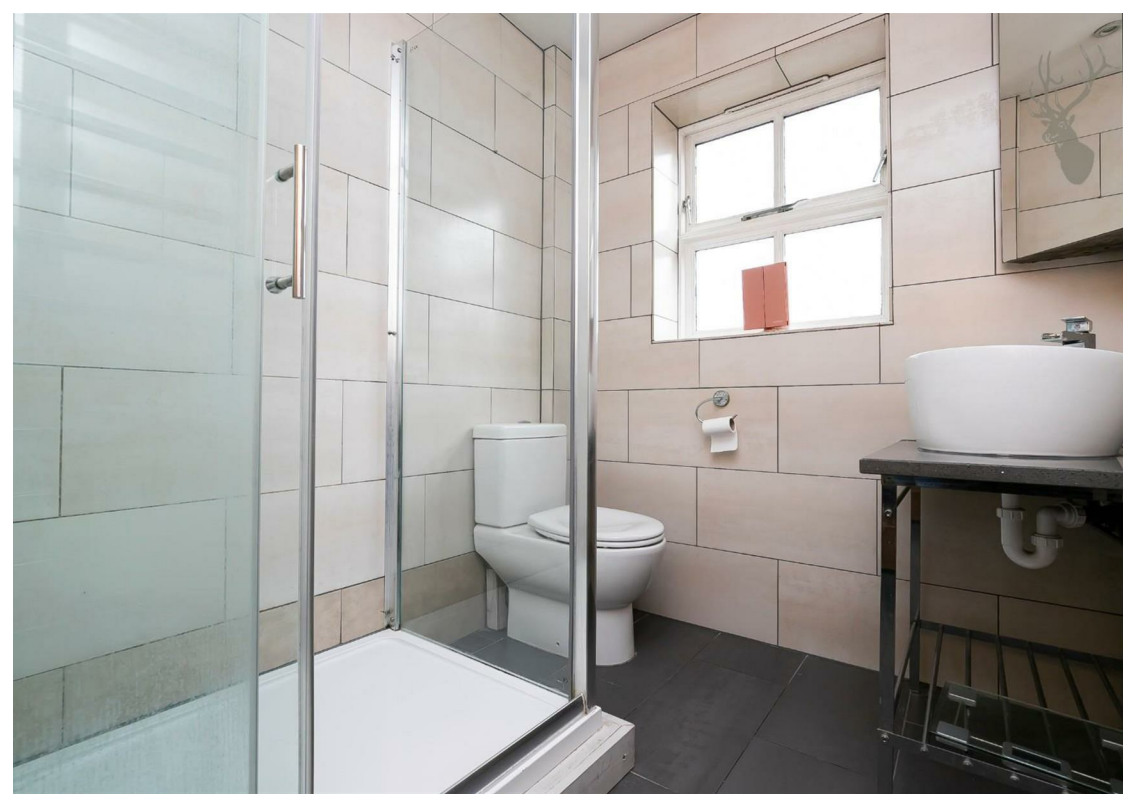
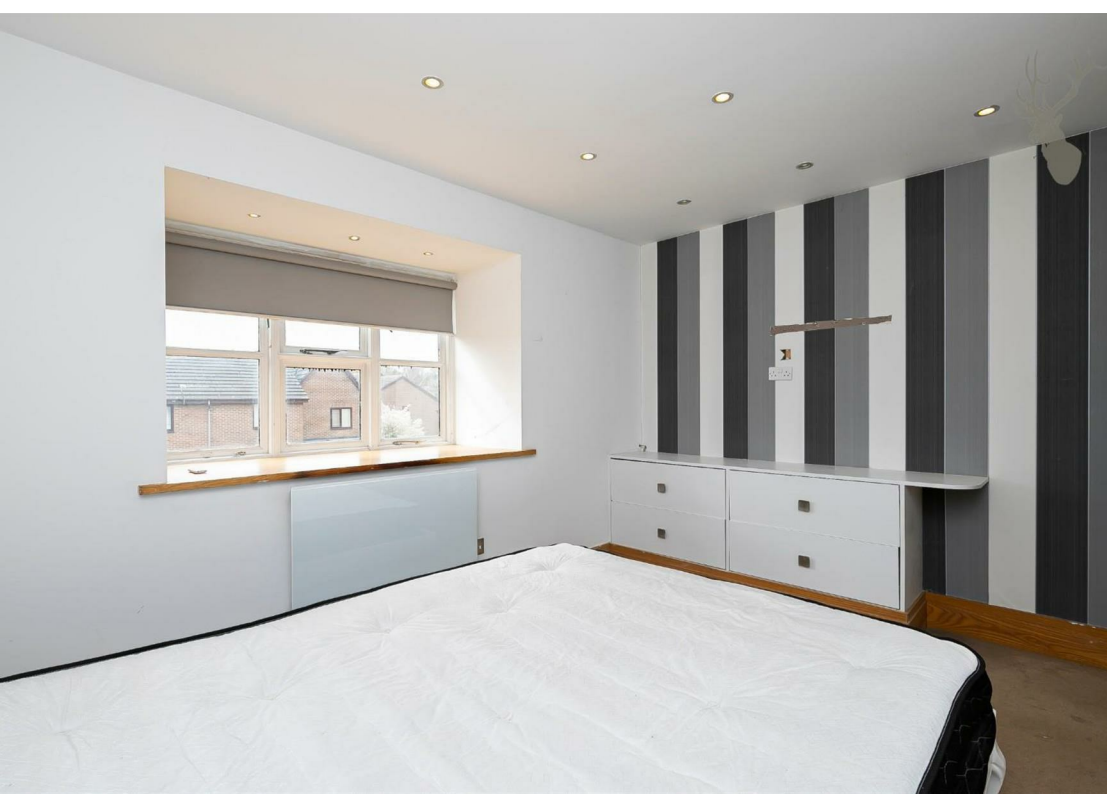
Access via a secure entrance with the stairs leading to the second floor, the apartment boasts a striking open plan lounge/kitchen/diner with the kitchen offering a full range of fitted appliances, two double bedrooms and a smart bathroom. This property also has two allocated parking spaces and access to loft which holds an abundance of storage.

Abridge is a beautiful village that is conveniently located for the nearby towns of Theydon Bois (with central line station), Chigwell and Loughton with transport that links to the M25 and M11. The village offers several pubs and restaurants, a coffee bar, newsagents and a primary school.

Available September

Council Tax Band C

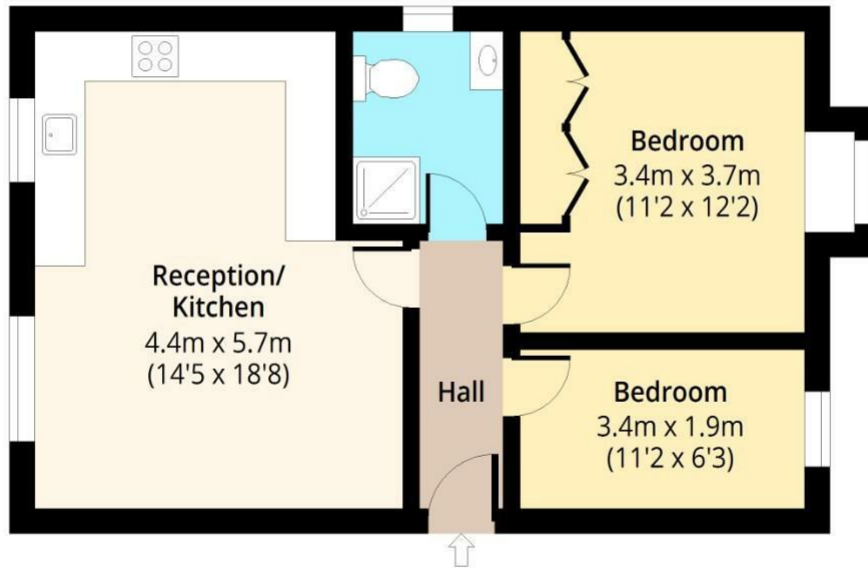




Orchid Close

Second Floor

Approx. 53.14 Sq. meters (572 Sq. feet)



Total area: approx. 53.14 Sq. meters (572 Sq. feet)
For illustration purposes only - not to scale
www.lpaplus.com

BUTLER & STAG

☎ 01992 667666

🏠 4 Forest Drive, Theydon Bois, Essex, CM16 7EY

✉ theydon@butlerandstag.com

www.butlerandstag.uk

IMPORTANT NOTICE - These particulars have been prepared in good faith and they are not intended to constitute part of an offer or contract. We have not performed a structural survey on this property and the services, appliances and specific fittings have not been tested. All photographs, measurements, floor plans and distances referred to are given as a guide and should not be relied upon.